

POPPY meets Pommé

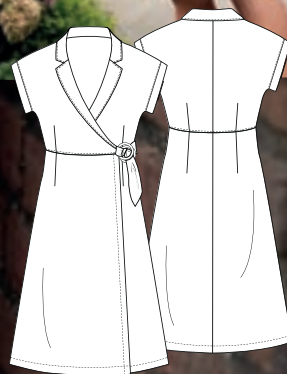


DRESS SUZY

EU | Size 36 - 52

UK | 8 - 24

US | 4 - 20



Available in
A4, US Letter and A0



GENERAL INSTRUCTIONS

Algemene instructies / Allgemeine Anleitung / Instructions Générales

ENGLISH



NEDERLANDS



DEUTSCH



FRANÇAIS



Size guide

Compare the body measurements with the sizes in the size chart. Choose the size that most closely matches the body measurements. For children, the height measurement is always the starting point.

Fabric

These patterns are based on a fabric width of 140 cm. If your fabric width differs from this measurement, the fabric consumption may change.

Seam Allowance

The patterns on the work sheet are provided without seam or hem allowances. We recommend adding 1–2 cm for seams and 2–3 cm for hems unless otherwise stated.

Before Cutting

The fabric layout diagram shows the most efficient way to cut the fabric, based on the fabric width we always use. The layout is based on the largest size. For smaller sizes, it may be possible to position the pattern pieces differently. The recommended fabric lengths take this into account as much as possible. Fabric lengths are listed in order of size.

Reinforcement

The parts shown in grey in the fabric layout diagram should be reinforced with iron-on interfacing.

Maattabel

Vergelijk de lichaamsmaten met de maten in de maattabel. Kies de maat die het meest overeenkomt met de lichaamsmaten. Voor kinderen is de lengtemaat altijd het uitgangspunt.

Stofverbruik

Bij deze patronen is uitgegaan van een stofbreedte van 140 cm breed. Wijkt je stof van deze maat af dan kan het stofverbruik veranderen.

Naadwaarde

De patronen staan zonder naden en zomen op het werkblad. Wij raden aan 1 à 2 cm naad en 2 à 3 cm zoom aan te knippen tenzij anders vermeld.

Voor het knippen

Het stofschematische laat zien hoe de - altijd door ons gebruikte - stof het voordeligst geknipt kan worden. Het stofschematische is van de grootste maat. Bij kleinere maten is het mogelijk de patroondelen anders op de stof te leggen. Bij de aangegeven stofmetrages is daar zoveel mogelijk rekening mee gehouden. De stofmetrages staan aangegeven in volgorde van de maten.

Verstevigen

De delen die in het stofschematische grijs gekleurd zijn worden verstevigd met plakvlies.

Größentabelle

Vergleichen Sie die Körpermaße mit den Maßen in der Größentabelle. Wählen Sie die Größe, die den Körpermaßen am nächsten kommt. Bei Kindern ist die Körperlänge immer der Ausgangspunkt.

Stoffverbrauch

Diese Schnittmuster basieren auf einer Stoffbreite von 140 cm. Weicht Ihre Stoffbreite von diesem Maß ab, kann sich der Stoffverbrauch ändern.

Nahtzugabe

Die Schnittmuster auf dem Arbeitsblatt enthalten keine Naht- oder Saumzugaben. Wir empfehlen, 1–2 cm für Nähte und 2–3 cm für Säume hinzuzufügen, sofern nicht anders angegeben.

Für das Zuschneiden

Der Stoffplan zeigt, wie der von uns verwendete Stoff am effizientesten zugeschnitten werden kann. Der Stoffplan basiert auf der größten Größe. Bei kleineren Größen können die Schnittteile möglicherweise anders auf dem Stoff platziert werden. Dies wurde bei den angegebenen Stoffmengen soweit wie möglich berücksichtigt. Die Stoffmengen sind in der Reihenfolge der Größen angegeben.

Verstärken

Die Teile, die im Stoffschematische grau eingefärbt sind, werden mit Nähvlies (Vlieseline) verstärkt.

Tableau des mesures

Comparez les mensurations avec celles du tableau des tailles. Choisissez la taille qui correspond le mieux aux mensurations. Pour les enfants, la taille de longueur est toujours le point de départ.

Consommation de tissu

Ces patrons sont basés sur une largeur de tissu de 140 cm. Si la largeur de votre tissu diffère de cette mesure, la consommation de tissu peut changer.

Valeur de couture

Les patrons sur le plan de travail sont fournis sans marges de couture ni ourlets. Nous recommandons d'ajouter 1 à 2 cm pour les coutures et 2 à 3 cm pour les ourlets, sauf indication contraire.

Avant la coupe

Le schéma de coupe montre comment le tissu – toujours utilisé par nos soins – peut être découpé de manière optimale. Le schéma est basé sur la plus grande taille. Pour les tailles plus petites, il est possible de disposer les pièces différemment sur le tissu. Cela a été pris en compte autant que possible dans les métrages indiqués. Les métrages de tissu sont donnés dans l'ordre des tailles.

Renforcement

Les parties colorées en gris dans le schéma de coupe doivent être renforcées avec de l'entoilage thermocollant.

SIZE LEGEND AND CHART

A. Chestwidth / Bovenwijdte / Oberweite / Largeur du haut

B. Waistwidth / Taillewijdte / Tailleweite / Largeur de taille

C. Hipwidth / Heupwijdte / Hüftweite / Largeur des hanches

D. Backlength / Ruglengte / Rückenlänge / Longueur d'arrière

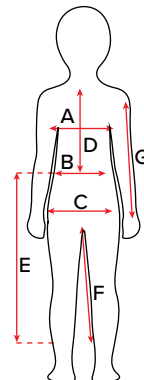
E. Trouserlength / Broeklengte / Hoselänge / Longueur d'pantalon

F. Inseam / Binnenbeenlengte / Innenbeinlänge / Longueur de l'intérieur de la jambe

G. Arm length / Armlengte / Armlänge / Longueur du bras

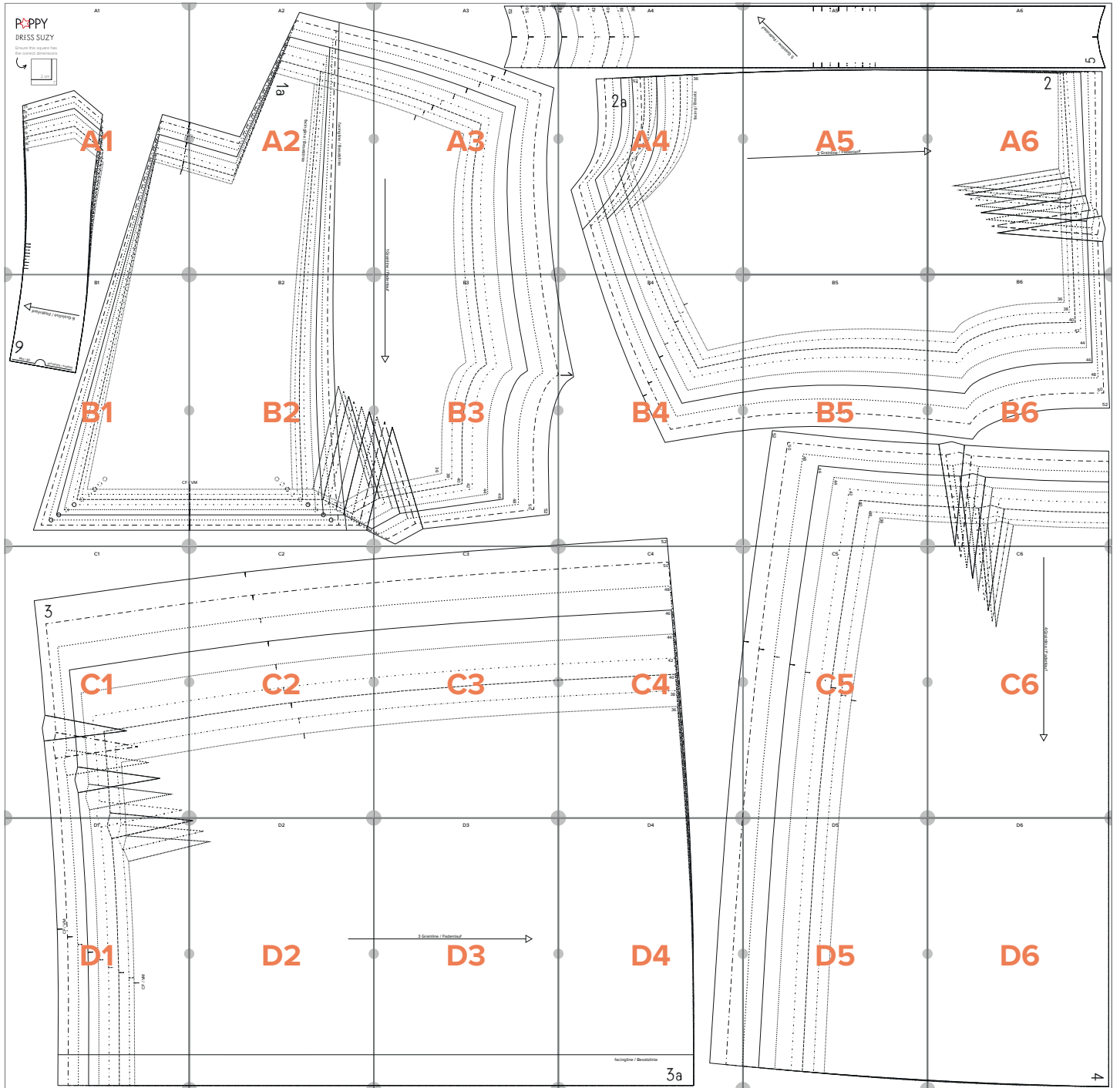
Ladies / Dames / Damen / Femmes

	36 8 / 4	38 10 / 6	40 12 / 8	42 14 / 10	44 16 / 12	46 18 / 14	48 20 / 16	50 22 / 18	52 24 / 20
A	88 cm 34,6 "	92 cm 36,2 "	96 cm 37,8 "	100 cm 39,4 "	106 cm 41,7 "	112 cm 44 "	118 cm 46,5 "	124 cm 48,8 "	130 cm 51,2 "
B	72 cm 28,4 "	76 cm 29,9 "	80 cm 31,5 "	84 cm 33 "	90 cm 35,5 "	96 cm 37,8 "	102 cm 40,2 "	110 cm 43,3 "	118 cm 46,5 "
C	94 cm 37 "	98 cm 38,5 "	102 cm 40 "	106 cm 41,7 "	112 cm 44 "	118 cm 46,5 "	124 cm 48,8 "	130 cm 51,2 "	136 cm 53,5 "
G	61 cm 24 "	61 cm 24 "	61,5 cm 24,2 "	61,5 cm 24,2 "	62 cm 24,5 "	62 cm 24,5 "	62 cm 24,5 "	62 cm 24,5 "	62 cm 24,5 "



PATTERN PIECES LAYOUT

Indeling van patroondelen / Anordnung der Schnittteile / Disposition des pièces du patron



DRESS SUZY

36 / 8 / 4 - 38 / 10 - 40 / 12 / 8 - 42 / 14 / 10 - 44 / 16 / 12 - 46 / 18 / 14 - 48 / 20 / 16 - 50 / 22 / 18 - 52 / 24 / 20

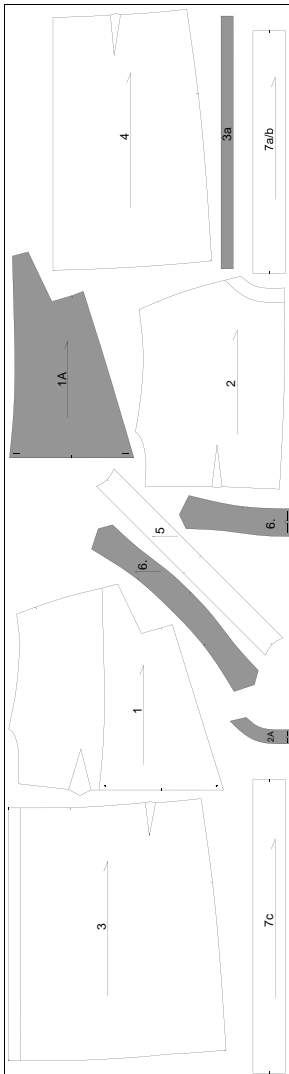
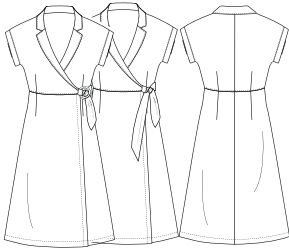


Fabric usage

175-175-190-200-210-225-245-250-270 cm
69-69-75-79-83-89-96-98-106 inches

Fabric advice

Viscose/Linen/Poplin/Cotton Satin



ENGLISH



Notions

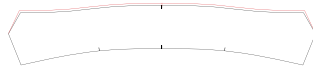
- 1 button
- Optional: 2 rings

Pattern pieces

1. Front 2x
- 1a. Front facing 2x
2. Back 2x
- 2a. Back neck facing 2x on fabric fold
3. Front skirt 2x
- 3a. Front skirt facing 2x
4. Back skirt 2x
5. Arm trim 2x
6. Under collar 1x
- 6a. Upper collar 1x
- 7a. Short belt ring 1x
- 7b. Short belt bow 1x
- 7c. Long belt ring and bow 1x

Cutting instructions

- Cut pattern piece 6a a few millimetres wider (a maximum of 5mm) than 6.



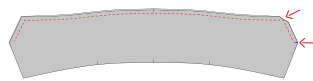
- Cut 7a and 7c for the ring, or 7b and 7c for the bow.

Cut to size

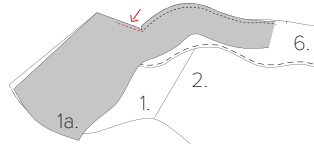
- 1x Short belt | ring 6 x 8cm
- 1x Short belt | bow 49-50-51-52-53,5-55-56,5-58-59,5 x 8 cm
- 1x Long belt ring and bow 64-65-66-67-68-69-70-71-72 x 8 cm

Instructions

1. Iron fusible interfacing onto the dark coloured pieces indicated in the fabric diagram.
2. Sew the darts.
3. Sew the centre back seam of the back pieces with the right sides facing each other.
4. Sew the shoulder seams of the front and back pieces with the right sides facing each other.
5. Place the collar with the right sides facing each other and sew the long side and the connecting short side. Turn the collar and thread the sewn edge.
6. Sew the shoulder seams of the front facing and back neck facing with the right sides facing each other.
7. Pin the collar onto the pieces with the right sides facing each other. Make sure the centre of the back piece matches the centre back of the collar.
8. Sew the collar to the pieces and leave 1cm of the seam free at the start and end points.
9. Pin the facing with the right sides onto the pieces with the collar in between. Sew the facing into the neckline up to the corners where the collar has also been sewn.
10. Cut the corners of the front and the facing up to the stitching.



11. Turn the facing so the short side lies flush with the unfinished part of the collar. Repeat this for the front. The collar will eventually be positioned between the right side of the front and the right side of the facing. The end of the collar will come up to the marking on the short side.
12. Sew the short side where the facing, collar and front are on top of each other and sew the long side of the lapel together. Turn the lapel collar, thread the collar and iron flat.



13. Sew the facing parts into the shoulder seam.
14. Sew the side seams of the top of the front and back pieces.
15. Fold the long belt in half lengthways and sew the long side and one short side. Turn the belt and iron it flat.
16. Sew the long belt approximately 1 cm from the top onto the left front skirt's side seam.
17. Sew the front and back skirt's side seams with the right sides facing each other.
- Rings**
18. Fold the short belt in half lengthways and sew the long side. Turn the belt and iron it flat.
19. Pull the short belt through the two rings and pin the short belt with the ends together.

Belt

18. Fold the short belt in half lengthways and sew the long side and one short side.
19. Turn the belt and iron it flat.
20. Thread the short belt (with or without the rings) approximately 1 cm from the top onto the right front skirt.
21. Sew the facing onto the right front skirt with the right sides facing each other and the short belt in between.
22. Sew the front facing onto the left front skirt with the right sides facing each other.
23. Place the skirt's and front sections' facing sections in an open position.
24. Sew the top and bottom pieces with the right sides facing each other.
25. Fold the front and the front facing with the right sides facing each other. Sew the lower edge of the front facing at the same height as the top and skirt pieces.
26. Turn the facing back.
27. Create a buttonhole in the corner of the left front piece. Put a button on the inside of the right front piece in the corner of the facing.
28. Sew the hem into the dress.
29. Fold the arm trim in half lengthways and sew the short sides. Turn the arm trim and fold it in half lengthways.

30. Sew the arm trim into the armhole.

NEDERLANDS



Furnituren

- 1 knoop
- Optioneel: 2 ringen

Patroondelen

1. Voorpand 2x
- 1a. Beleg voorpand 2x
2. Rugpand 2x
- 2a. Halsbeleg achter 2x aan stofvoouw
3. Voorrok 2x
- 3a. Beleg voorrok 2x
4. Achterrok 2x
5. Arm bies 2x
6. Onderkraag 1x
- 6a. Bovenkraag 1x
- 7a. Ceintuur kort ring 1x
- 7b. Ceintuur kort strik 1x
- 7c. Ceintuur ring en strik lang 1x

Knipinstructies

- Knip patroondeel 6a enkele millimeters ruimer (maximaal 5mm) dan 6. Zie tekening.
- Knip 7a en 7c voor de ring, of 7b en 7c voor de strik.

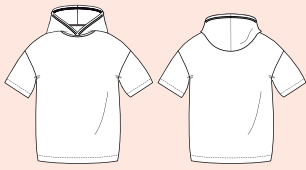
Knippen op maat

- 1x Ceintuur kort | ring 6 x 8cm
- 1x Ceintuur kort | strik 49-50-51-52-53,5-55-56,5-58-59,5 x 8 cm
- 1x Ceintuur ring en strik lang 64-65-66-67-68-69-70-71-72 x 8 cm

Instructies

1. Strijk plakvlies op de donkergekleurde delen aangegeven in het stofschema.
2. Stik de figuurnaaden.
3. Stik de middenachternaad van de rugpanden met de goede kanten op elkaar.
4. Stik de schoudernaaden en van de voor- en rugpanden met de goede kanten op elkaar.
5. Leg de kraag met de goede kanten op elkaar en stik de lange zijde en aansluitende korte zijde. Keer de kraag en rijg de gestikte rand. Zie tekening.
6. Stik de schoudernaaden van beleg voorpand en halsbeleg achter met de goede kanten op elkaar.
7. Speld de kraag op de panden met de goede kanten op elkaar. Let op dat middenachter rugpand overeenkomt met middenachter van de kraag.
8. Stik de kraag aan de panden en houdt 1cm naad vrij aan begin- en eindpunt.
9. Speld het beleg met de goede kant op de panden met daartussen de kraag. Stik het beleg in de halslijn tot de hoeken waar ook de kraag is gestikt. Zie tekening.
10. Knip de hoeken van het voorpand en het beleg in tot het stiksel.

POPPY MAGAZINE | EDITION 24

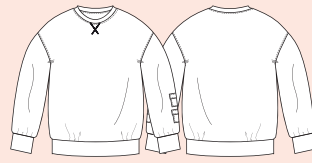


#POPPYMILO



SHIRT MILO

92 / 2 yrs. / 2T - 164 / 13 yrs. / 14



#POPPYSAM



SWEATER SAM

92 / 2 yrs. / 2T - 164 / 13 yrs. / 14

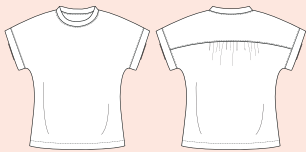


#POPPYLUCA



TROUSERS LUCA

92 / 2 yrs. / 2T - 164 / 13 yrs. / 14

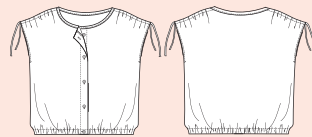


#POPPYBELLE



T-SHIRT BELLE

92 / 2 yrs. / 2T - 164 / 13 yrs. / 14

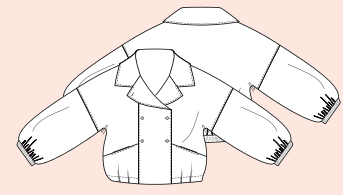


#POPPYJOLIE



BLOUSE JOLIE

86 / 12 mo. / 18M - 164 / 13 yrs. / 14



#POPPYIVY



JACKET IVY

92 / 2 yrs. / 2T - 164 / 13 yrs. / 14

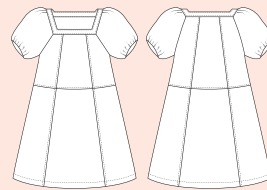


#POPPYNOOR



SKIRT NOOR

86 / 12 mo. / 18M - 164 / 13 yrs. / 14



#POPPYJASMINE



DRESS JASMINE

116 / 5 yrs. / 5 - 164 / 13 yrs. / 14

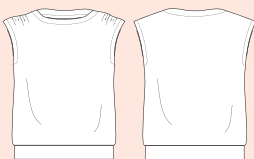


#POPPYAMALIA



TROUSERS AMALIA

92 / 2 yrs. / 2T - 164 / 13 yrs. / 14

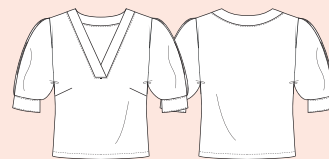


#POMMEYARA



TOP YARA

36 / 8 / 4 - 46 / 18 / 14

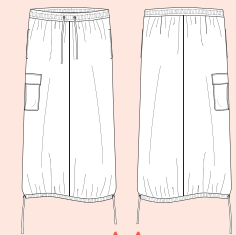


#POMMEELENA



BLOUSE ELENA

36 / 8 / 4 - 52 / 24 / 20

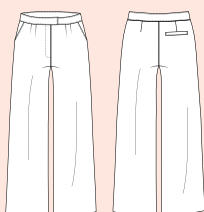


#POMMEJADE



SKIRT JADE

36 / 8 / 4 - 46 / 18 / 14

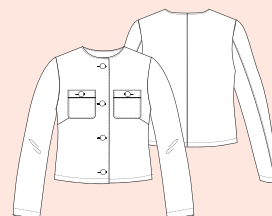


#POMMEROSINE



TROUSERS ROSINE

36 / 8 / 4 - 46 / 18 / 14

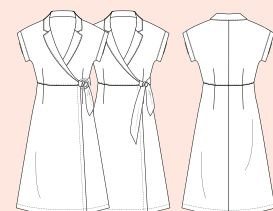


#POMMERAVEN



JACKET RAVEN

36 / 8 / 4 - 46 / 18 / 14



#POMMESUZY



DRESS SUZY

36 / 8 / 4 - 52 / 24 / 20